



 **StairService**  
a step ahead... a step above



## Welcome to Stair Service, LLC.

### MISSION

Stair Service, LLC. is dedicated to continue and expand our modular European and contemporary railing systems while bringing the world affordable, attractive and unique designs through the integration and combination of various metals, glass and natural materials.

### ENVIRONMENTAL

Stair Service is recyclable conscious, using materials with recycled content whenever possible.

Most of our products used in these systems are 100% recyclable and will give you many years of use and pleasure.

### WE OFFER

- Design
- Fabrication
- Distribution
- Interior and Exterior Systems
- Commercial and Residential
- Stock and Custom Service



# Index

Welcome	02
Index	03
Quote and Order Process	04
True View Glass Railing Systems 1-4	05
True View Glass Railing Systems 5-8	06
True View Glass Railing Systems 9-12	07
Secure View Cable Railing Systems 1-2	08
Secure View Cable Railing Systems 3-6	09
Secure View Cable Railing Systems 7	10
Defined Line Horizontal Rod/Tube Systems 1-4	11
Defined Line Horizontal Rod/Tube Systems 5-7	12
Material and Mounting Options	13-15
UBC, ICBO, ADA, CSI and Distributor Information	16
Project Drawing Example	17
Railing System Quote Request Form	18





## Quote and Order Process

Dear Valued Customer,

Stair Service, LLC. is here to provide our customers with versatile, modern and affordable hand rail systems for both residential and commercial applications. Our systems are easy to order and can be installed by most contractors and do it yourselves. We offer installation in most areas through Trade Partners. Our systems do not require any welding or expensive equipment to install.

**SELECTING** Choose a system from any of our three categories. Glass, Cables, or Rods.

**MATERIAL** Stainless Steel, for interior (AISI 304) or for exterior (AISI 316), and carbon steel is available for most systems. Most wood species are available for handrail and all wood systems.

**GET A QUOTE** Fill out a Quote Request Form found on page 18, including your system choice along with any options you would like. Send us your request along with a sketch or drawings (See page 17 for drawing examples). Include all measurements. E-mail to: [sales@stairservice.com](mailto:sales@stairservice.com). Quotes average 2-3 days to receive.

Once you receive your quote, please verify the quantities and descriptions. Contact us if you have any questions.

**ORDERING** Contact your estimator to place your order. Upon receiving your deposit, you will receive a floor plan and elevation drawing with measurements for your approval. Drawings can take from 1 to 3 days depending on size of project and current work loads.

**FABRICATION** As soon as we receive your written approval or signed drawings we will fabricate your new system. Most products are in stock and only need to be sized for your site conditions. Fabrication averages about 1-2 weeks.

**DELIVERY** Shipping time varies. West Coast 1-3 days, Central 2-4 days, East Coast 5-7 days.

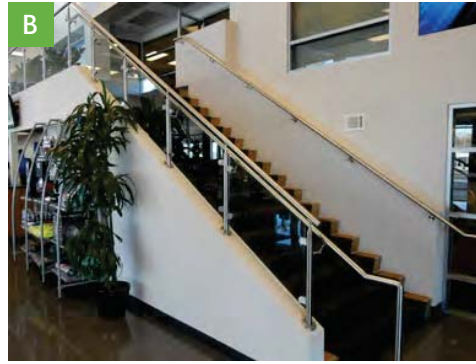
**INSTALLATION** Our systems come with easy to read instructions and our knowledgeable sales staff will help you every step of the way. Installation service is available in most areas through trade partners and Stair Service distributors.

**GLASS SYSTEMS** Stair Service includes tempered glass only if installation is being provided by us or a Stair Service Distributor. Purchasing glass locally will save you the additional costs associated with the glass installation such as CAD drawings, crating and shipping. **Note:** glass should be installed by qualified professionals.



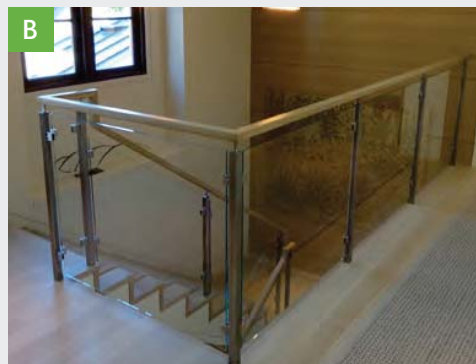


## True View Glass Railing Systems 1-4



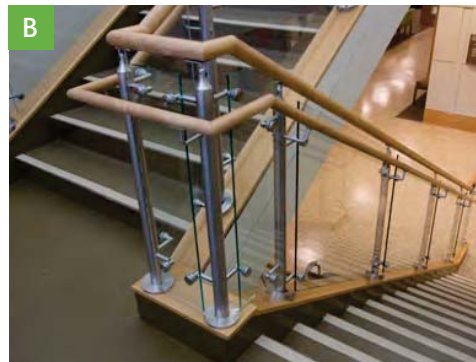
### System 1 (TVG1) Round 1-11/16"

Posts: 5400.042  
Top Brackets: 500/510  
Glass Clips: 2210.042  
Flanges: (A) Top Mount  
Flanges: (B) Custom  
Flange Covers: (A) 0511.042  
Flange Covers: (B) Custom  
Rail: 0900.042 (1-11/16")  
Glass: 3/8" Clear



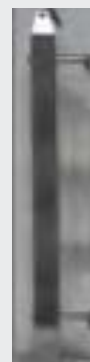
### System 2 (TVG2) Square 1-9/16"

Posts: 6400.040  
Top Brackets: 600/610  
Glass Clips: 2110.000  
Flanges: (A) Top Mount  
Flanges: (B) Embedded  
Flange Covers: (A) 4511.040  
Flange Covers: (B) None  
Rail: Wood Rectangle  
Glass: 3/8" Clear



### System 3 (TVG3) Round 2"

Posts: 5400.050  
Top Brackets: 700/710  
Glass Mount: SA1.050  
Flanges: (A) Top Mount  
Flanges: (B) Custom  
Flange Covers: (A) 0511.050  
Flange Covers: (B) Custom Rail:  
Wood 2" Round  
Glass: 3/8" Clear



### System 4 (TVG4) Square 2"

Posts: 6400.050  
Top Brackets: (A) 800/810 Glass  
Mount: SA1.050  
Flanges: 4511.040  
Flange Covers: None  
Rail: 8300.000  
Glass: 3/8" Clear





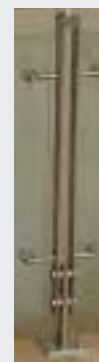
## True View Glass Railing Systems 5-8



### System 5 (TVG5)

#### Fin

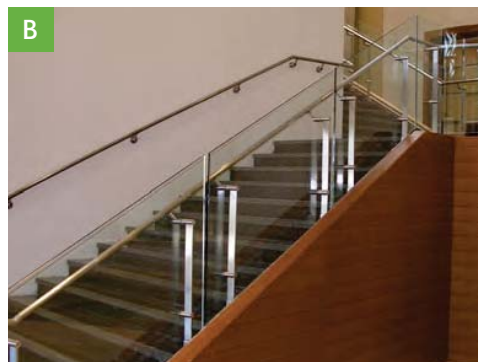
Posts: 7400.Fin  
 Top Brackets: 740.Fin  
 Glass Mount: SA1.000  
 Flanges: Top Mount  
 Flange Covers: 740.FPFC  
 Rail: Custom Wood  
 Post Sides: Matching Wood  
 Glass: 3/8" Clear



### System 6 (TVG6)

#### Double Blade

Posts: 7500.DB  
 Top Brackets: 750.DB  
 Glass Mount: SA1.000  
 Flanges: Top Mount  
 Flange Covers: 750.SBFC  
 Rail: 0900.042  
 Glass: 3/8" Clear



### System 7 (TVG7)

#### Single Blade

Posts: TVG7 (Single Blade)  
 Top Brackets: As shown  
 Glass Clips: Barrel Mount  
 Flanges: (A) Top Mount  
 Flanges: (B) Fascia Mount  
 Flange Covers: None  
 Rail: 0900.038  
 Glass: 1/2" Clear

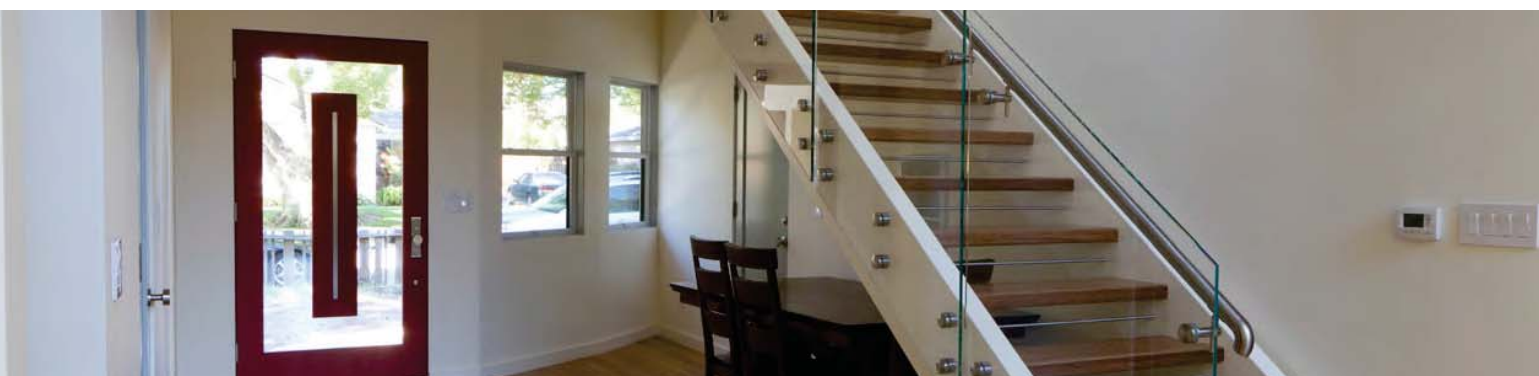


### System 8 (TVG8)

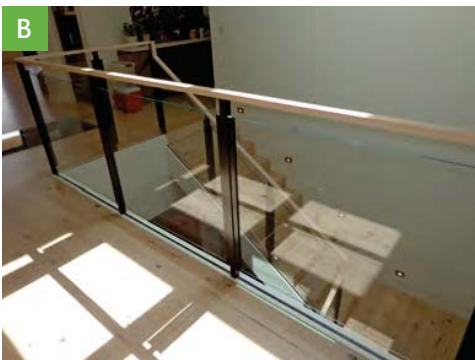
#### Round 1-11/16"

Posts: 5400.042  
 Top Brackets: 500/510  
 Glass Clips: 2210.042  
 Rods: 0900.012  
 Rod Holders: 0830.042  
 Flange: Top Mount  
 Flange Covers: 0511.042  
 Rail: 0900.042  
 Glass: 3/8" Clear



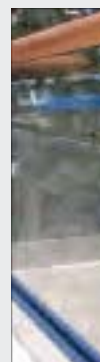


## True View Glass Railing Systems 9-12



### System 9 (TVG9) Square 1-9/16"

Posts: 6400.040  
Top Bracket : 640F  
Side Channels: 11325CH.000  
Flange: Embedded  
Flange Cover: None  
Rail: Custom Wood  
Glass: 1/2" Clear



### System 10 (TVG10) Channel

Channel: TL.B5G20D  
Cladding: (A) BSCBS10  
Cladding: (B) Embedded  
Rail: (A) 6920.042  
Rail: (B) Custom Wood  
Glass: 1/2" Clear

Wood Wall Rail in picture  
is not Code Compliant



### System 11 (TVG11) Spigots

Spigots: 6012  
Glass set in channel  
Rail: (A) Custom Wood  
Rail: (B) 6920.042  
Glass: 1/2" Clear

Wall Rail or Top Rail May  
Be Required For Code



### System 12 (TVG12) Barrel Clips

Barrel Clips: (A) 0747  
Barrel Clips: (B) 0749  
Rail: 0900.042  
Glass: 1/2" Clear

Wall Rail or Top Rail May  
Be Required For Code





## Secure View Cable Railing Systems 1-2



### System 1 (SVC1) Round 1-11/16"

Posts: 5400.042  
 Top Brackets: 500/510  
 Flange: (A) Custom  
 Flange: (B) Top Mount  
 Flange Covers: 0511.042  
 Rail: 0900.042  
 Cables: 1/8" or 3/16"

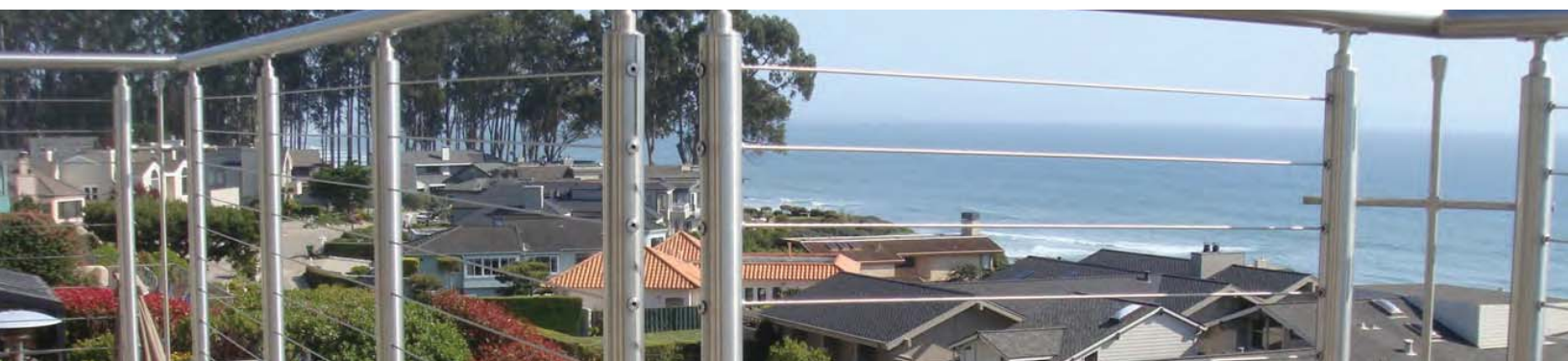


### System 2 (SVC2) Square 1-9/16"

Posts: 6400.040  
 Top Brackets: (A) 600/610  
 Top Brackets: (B) 640F  
 Flanges: Top Mount  
 Flange Covers: 4511.040  
 Rail: 8300.000  
 Cables: 1/8" or 3/16"





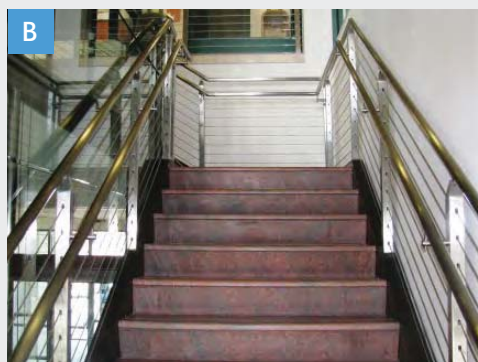


## Secure View Cable Railing Systems 3-6



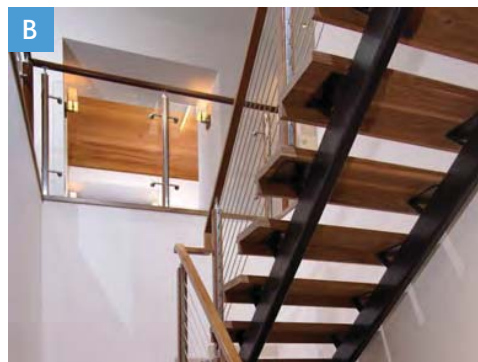
### System 3 (SVC3) Round 2"

Posts: 5400.050  
 Top Brackets: 700/710  
 Flanges: Top Mount  
 Flange Covers: 0511.050  
 Rail: 0900.050  
 Cables: 1/8" or 3/16"



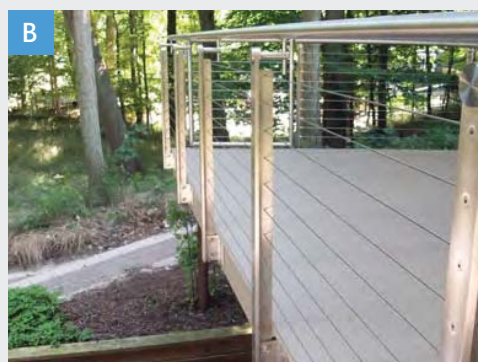
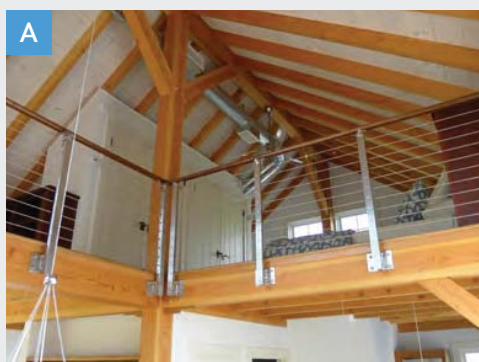
### System 4 (SVC4) Square 2"

Posts: 6400.050  
 Top Brackets: 800/810  
 Flanges: Embedded  
 Flange Covers: None  
 Rail: 0900.050  
 Cables: 1/8" or 3/16"



### System 5 (SVC5) Fin

Posts: 7400.FIN  
 Top Brackets: 740.FIN  
 Flanges: Top Mount  
 Flange Covers: Custom  
 Rail: Custom Wood  
 Cables: 1/8" or 3/16"



### System 6 (SVC6) Tee

Posts: 7700.TEE  
 Top Brackets: 770.TEE  
 Flanges: Fascia Mount  
 Flange Covers: None  
 Rail: 0900.042  
 Cables: 1/8" or 3/16"





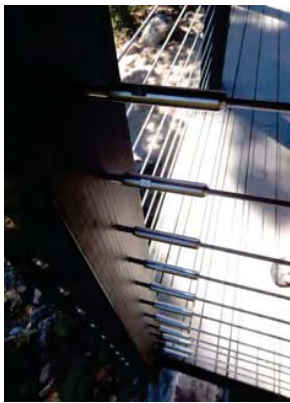
## Secure View Cable Railing Systems 7



### System 7 (SVC7) Wood 3-1/2"

Posts: 3-1/2" Wood  
Flanges: Top Mount  
Flange Covers: None  
Rail: Custom Wood  
Cables: 1/8" or 3/16"

Wall Rail May Be  
Required For Code







## Defined Line Horizontal Rod / Tube Systems 1-4



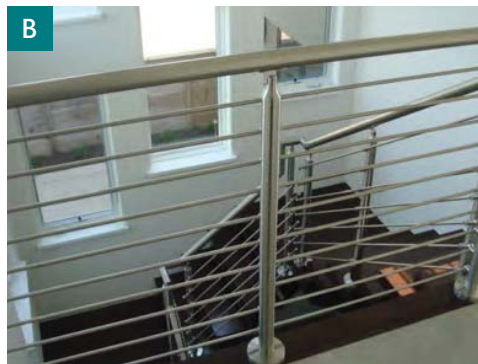
### System 1 (DLH1) Round 1-11/16"

Posts: 5400.042  
 Top Bracket 500/510  
 Solid Rods: 0900.012  
 Rod Holders: 0830.042  
 Flanges: (A) Fascia  
 Flanges: (B) Top Mount  
 Flange Cover: 0511.042  
 Rail: 0900.042



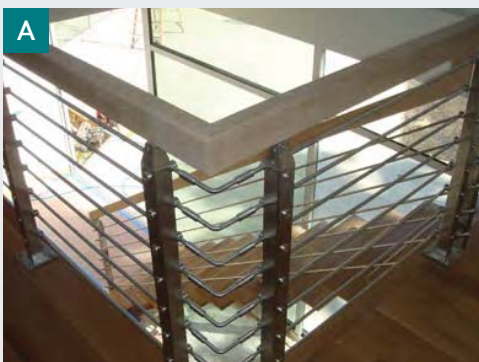
### System 2 (DLH2) Square 1-9/16"

Posts: 6400.040  
 Top Bracket 600/610  
 Solid Rods: (A) 0900.012  
 Solid Bars: (B) 4900.015  
 Rod Holders: (A) 0830.000  
 Bar Holders: (B) 4821.000  
 Flanges: Top Mount  
 Flange Cover: 4511.040  
 Rail: Custom Wood



### System 3 (DLH3) Round 2"

Posts: 5400.050  
 Top Bracket 700/710  
 Solid Rods: 0900.012  
 Rod Holders: 0830.050  
 Flanges: Top Mount  
 Flange Cover: 0511.050  
 Rail: 0900.050



### System 4 (DLH4) Square 2"

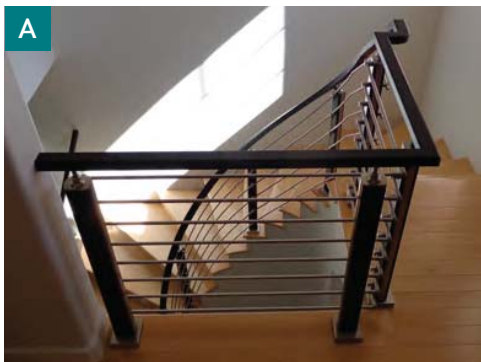
Posts: 6400.050  
 Top Bracket 800/810  
 Solid Rods: 0900.012  
 Rod Holders: 0830.000  
 Flanges: Top Mount, Exposed  
 Flange Cover: None  
 Rails: Custom Wood

Wood Wall Rail in picture is  
 not Code Compliant





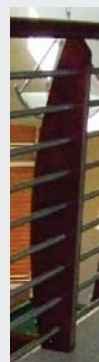
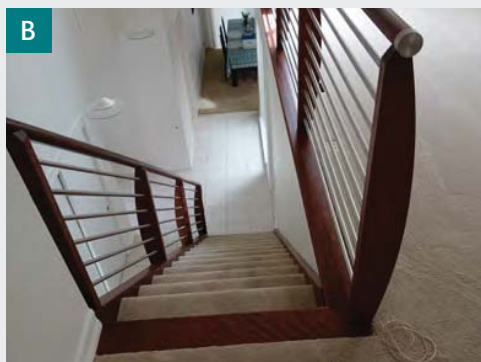
## Defined Line Horizontal Rod / Tube Systems 5-7



### System 5 (DLH5)

#### Fin

Posts: 7400.FIN  
 Top Brackets: 740.FIN  
 Solid Rods: 0900.12  
 Rod Holders: 0831.000  
 Flanges: Top Mount  
 Flange Covers: Custom  
 Rail: Custom Wood



### System 6 (DLH6)

#### Wood Sail

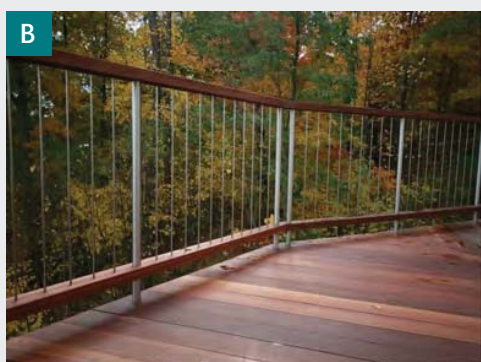
Posts: 2x6 Sail  
 Top Brackets: Custom  
 Solid Rods: 0900.012  
 Rail: Custom Wood 2"



### System 7 (DLH7)

#### Square Wood 3-1/2"

Posts: 350  
 Rods: 0900.012  
 Rail: Custom Wood



### System 8 (DLH8)

#### Vertical Tube

Posts: (A) Custom Wood  
 Posts: (B) 5400.042  
 Vertical Tube: 0912.012  
 Flanges: (A) N/A  
 Flanges: (B) Embedded  
 Rail: Custom Wood



## Rail Connections

### Adjustable Angles



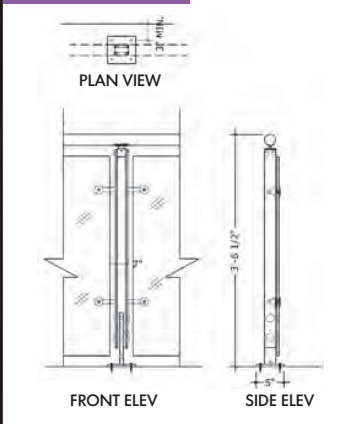
### Custom Fixed Angles



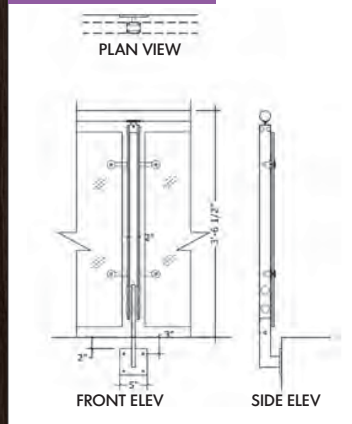
## Mounting Options

Machine fastened or welded

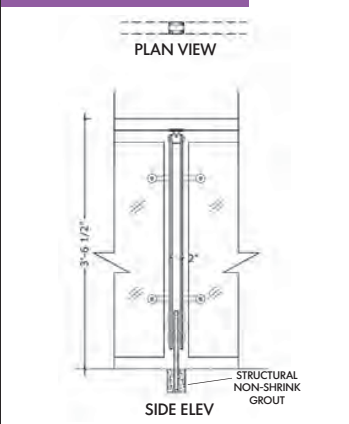
### Top Mounted



### Fascia Mounted



### Core Mounted



## Material and Mounting Options

Most systems and components are available in the following materials and finishes.

**POSTS** AISI # 304 and AISI # 316 Stainless Steel with # 6 brushed finish. Paint and powder coating is not available and must be done on site.

**RAIL** 1-1/2", 1-11/16", 2" AISI # 304 and AISI # 316 Stainless Steel with # 6 brushed finish. Paint and powder coating is not available and must be done on site.

Hardwood 1-1/2", 1-3/4" and 2" Round, Square, Rectangle and Custom Profiles. Most Species.

### INFILL:

**GLASS** 3/8" or 1/2" Tempered. Clear, Satin and Smoked. Polished edges and hit corners.

**CABLE** Cable 1/8" or 3/16" AISI # 316 Stainless Steel. Invisaware AISI # 316 Hardware.

**RODS** 1/2" (12mm) Solid AISI # 304, # 316 Stainless Steel with Brushed Finish or Carbon Steel.

**TUBES** 1/2" and 3/4" AISI # 304, # 316 Stainless Steel with Brushed Finish and Carbon Steel. 3/4" Tubes are only used on Wood post systems.

**PANELS** Perforated AISI # 304 and AISI # 316 Stainless Steel with Brushed Finish and Carbon Steel.



# Material and Mounting Options

## STAINLESS STEEL CHEMICAL COMPOSITION

GRADE	C	Si	Mn	P	S	Ni	Cr	Mo
304	<0.08	<1.00	<2.00	<0.035	<0.035	8.0-10.50	18.00-20.50	18.00-20.50
316	<0.08	<1.00	<2.00	<0.035	<0.035	10.00-14.00	16.00-18.00	16.00-18.00

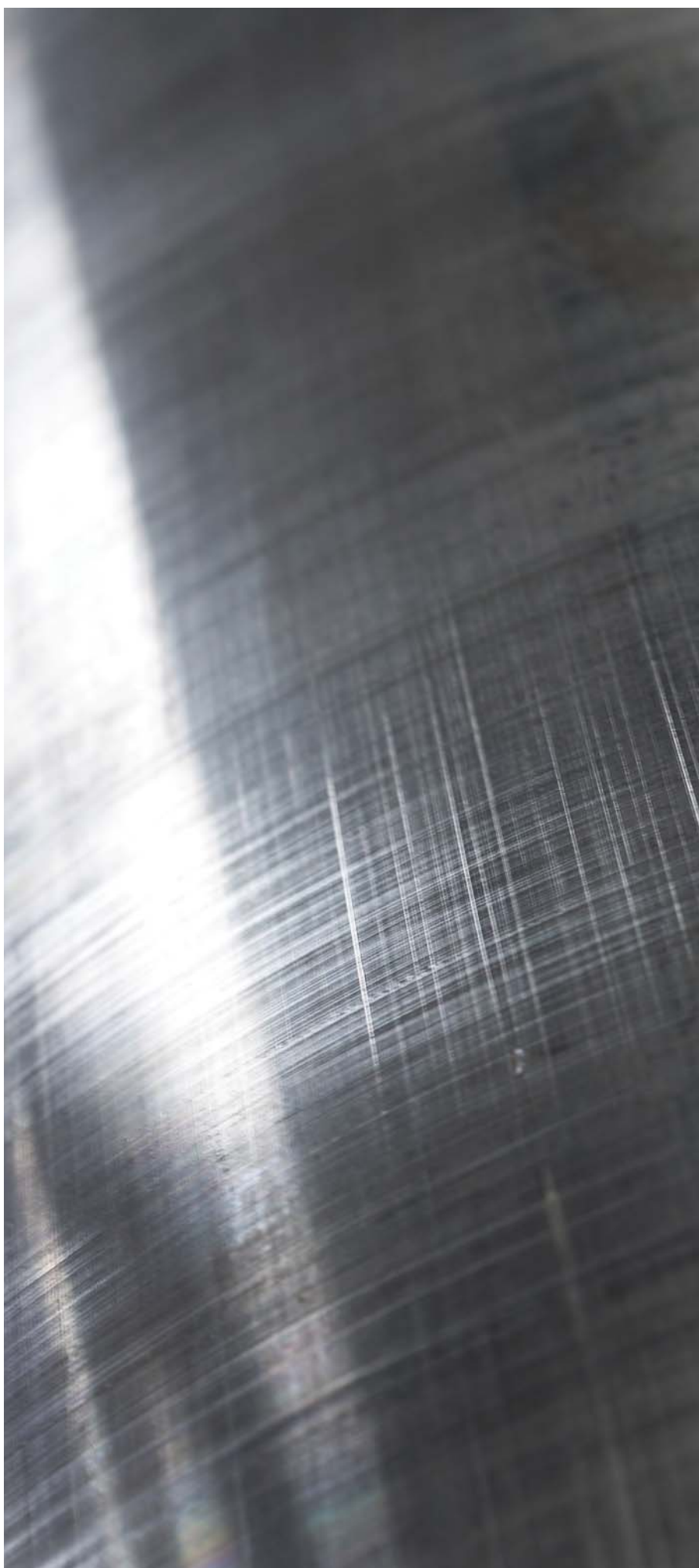
There are many grades of stainless steel, the majority of stainless steel items in this catalogue are grade 304 & 316.

Grade 304 is the most common stainless steel, and satisfies a broad demand for adequate performance at an affordable price. It has good corrosion resistance in a wide variety of environments, is a best choice for indoor use (except swimming pools, etc.).

Grade 316 has a higher level of corrosion resistance. The Grade 316 is often referred to as “marine grade”. Typical applications are architectural components where they are exposed to extreme weather and climatic conditions, such as near the coast, near industrial sites or in swimming pools.

## CORROSION DEFINITION

When stainless steel is produced, the chromium forms an outer oxide layer. As long as this layer remains intact, the stainless steel remains passive. But once the oxide layer begins to break down, the stainless steel becomes active and its corrosion resistance is reduced, and rust will be seen.







## Material and Mounting Options

### STAINLESS STEEL “TEA STAINING”

Stainless steel may suffer from a brown discoloration, or “tea staining” over time. It is visual impairment only, and does not affect the structural integrity or the longevity of the material. The staining occurs most commonly within about 5 kilometers from the sea and becomes progressively worse closer to the marine source. However, wind exposure, pollution and higher temperatures can create environments where tea staining might occur 20 kilometers or more from sea water.

### HOW TO DEAL WITH “TEA STAINING”

#### A) Specify Grade 316 Stainless Steel

Grade 316 is ideal for marine and highly corrosive environments.

#### B) Choose a smoother surface

The main cause of stain is salt deposited on the stainless steel surface. To reduce the risk of tea staining, choosing or creating a smoother surface of the product is an ideal method.

#### C) Maintain regularly

Stainless steel is not maintenance free but maintenance friendly. When using steel material outdoors, you need to clean periodically, especially in aggressive environments like coastal areas or swimming pools.

Rain washing regularly will reduce the risk of tea staining. The best way with soap or mild detergent and warm water followed by rinsing with clean cold water. The appearance of the surface can be improved further after wiped dry.

#### D) Installation and Inspection

After installation, the completed structure should be washed and inspected from imperfection or contaminants caused in the installation process. If discovered, imperfections should be cleaned off and polished with a suitable stainless polish.



## IBC, ICBO, ADA, CSI and Distributor Information

### IBC / ADA Compliance Information:

Stair Service, Inc. railing systems are designed to comply with all applicable building codes, technical standards and safety requirements in North America. Because of variations in local codes and interpretations of codes it is advised to check with your local building departments.

**ENGINEERING** Most Stair Service, Inc. rail systems have engineering data available. Consumers are responsible for engineering systems to their specific site conditions. If required, engineering services are available. Modular systems will save you money with non-reoccurring engineering (NRE) costs.

**CSI** Most systems have CSI 3 part specifications available upon request.

**CAD** CAD drawings are available to Architects and Designers but remain the property of Stair Service, Inc. with all rights reserved.

### DISTRIBUTOR PROGRAM

Stair Service, Inc. has developed a Trade Partner Program to help professionals expand their product lines and revenues with unique cost savings handrail systems. Benefits include referrals, design services, marketing and technical assistance.

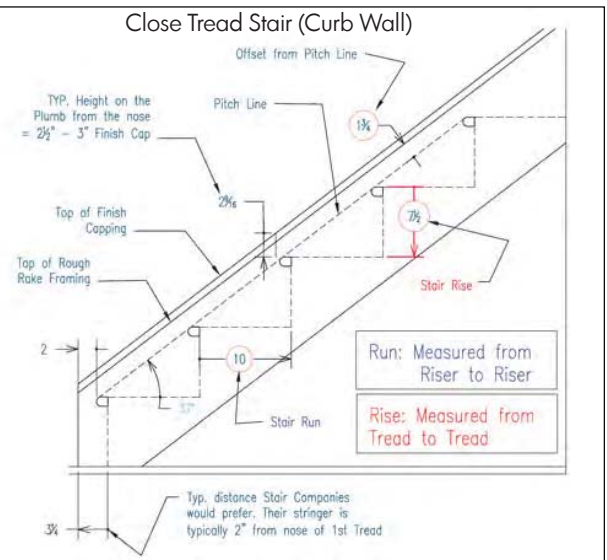
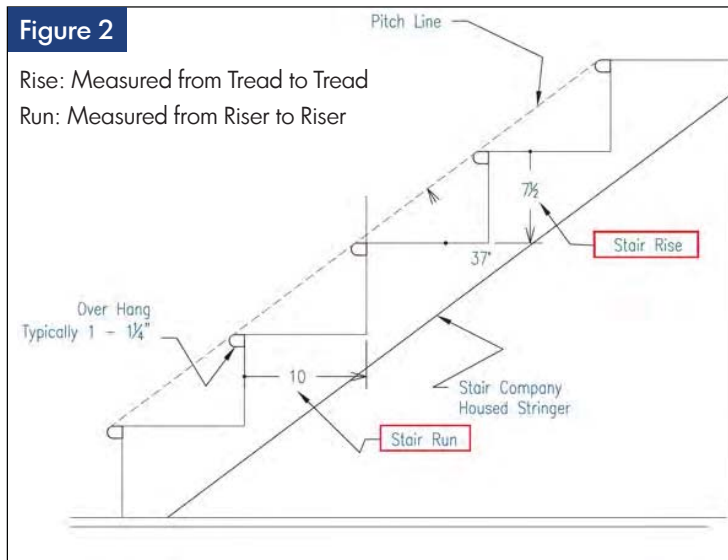
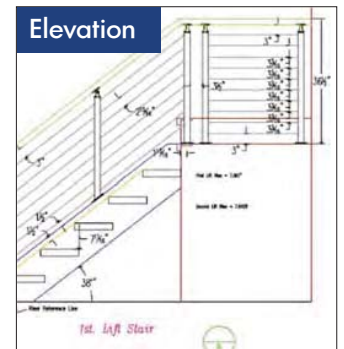
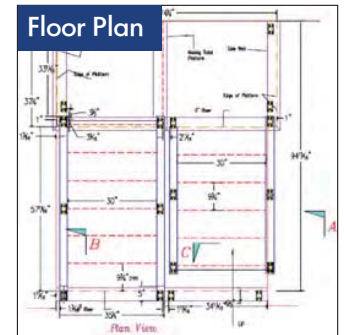
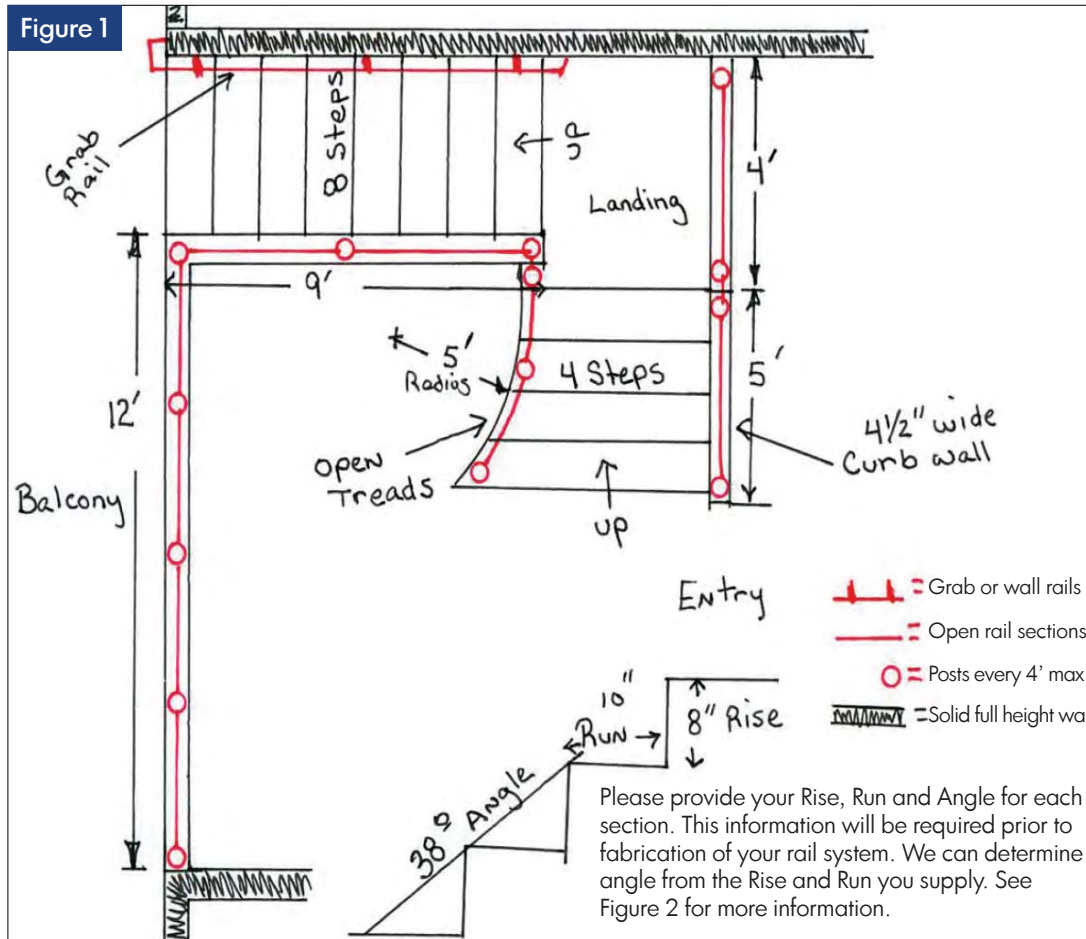
If you would like to participate, please contact us for more information.





# Project Drawing Example

If you do not already have Architectural drawings, use the example below to create your own floor plan drawing. Please include riser height, tread run and all measurements. Send us the drawing and quote request form found on page 18.  
(See Figure 2 for riser height and tread run explanation).





# Railing System Quote Request Form

## CONTACT INFORMATION

Name: \_\_\_\_\_ Sales Rep: \_\_\_\_\_

Date: \_\_\_\_\_ Signature: \_\_\_\_\_

## BILLING INFORMATION

Name: \_\_\_\_\_ Address: \_\_\_\_\_

Address: \_\_\_\_\_ City: \_\_\_\_\_ State: \_\_\_\_\_ Zip: \_\_\_\_\_

Phone Number: \_\_\_\_\_ Fax Number: \_\_\_\_\_

E-mail Address: \_\_\_\_\_

## PROJECT ADDRESS

Name: \_\_\_\_\_ Company: \_\_\_\_\_

Address: \_\_\_\_\_ City: \_\_\_\_\_ State: \_\_\_\_\_ Zip: \_\_\_\_\_

## PROJECT ADDRESS (CHECK ALL THAT APPLY)

Project Type	<input type="checkbox"/> Commercial	<input type="checkbox"/> Residential	<input type="checkbox"/> Interior	<input type="checkbox"/> Exterior
Project Location	<input type="checkbox"/> Main Stairway	<input type="checkbox"/> Secondary Stairway	<input type="checkbox"/> Balcony	<input type="checkbox"/> Deck
Comments: _____				
Mounting Surface	<input type="checkbox"/> Wood Deck	<input type="checkbox"/> Composite Deck	<input type="checkbox"/> Interior Wood	<input type="checkbox"/> Steel <input type="checkbox"/> Concrete
Support Post Mounting	<input type="checkbox"/> Top Mount	<input type="checkbox"/> Fascia Mount	<input type="checkbox"/> Welded	<input type="checkbox"/> Core Drilled
Please Describe: _____				
Drawing Submittal Format (Please include all measurements)	<input type="checkbox"/> Sketch	<input type="checkbox"/> Blueprints	<input type="checkbox"/> AutoCAD File	<input type="checkbox"/> PDF File

## SYSTEM SPECIFICATIONS (CHECK ALL THAT APPLY)

Please Insert System Number		True View Glass TVG# _____	Secure View Cable SVC# _____	Defined Line DLH# _____
System Infill	Size Options	<input type="checkbox"/> Include Glass <input type="checkbox"/> 3/8" <input type="checkbox"/> 1/2"	<input type="checkbox"/> 1/8" <input type="checkbox"/> 3/16"	<input type="checkbox"/> 1/2" <input type="checkbox"/> 9/16" <input type="checkbox"/> 3/4"
	Glass Options	<input type="checkbox"/> Clear <input type="checkbox"/> Satin <input type="checkbox"/> Smoked		
Material Type				
Brushed Stainless Steel		<input type="checkbox"/>	<input type="checkbox"/>	<input type="checkbox"/>
Unfinished Carbon Steel		<input type="checkbox"/>	<input type="checkbox"/>	<input type="checkbox"/>
Wood Species (please specify)		_____	_____	_____
Balcony Height	<input type="checkbox"/> 36" <input type="checkbox"/> 42-1/4" <input type="checkbox"/> Other (please specify): _____			
Top Rail	<input type="checkbox"/> Stainless Steel <input type="checkbox"/> Carbon Steel <input type="checkbox"/> Other (please specify): _____			
Would you like us to perform the installation for you? <input type="checkbox"/> Yes, please <input type="checkbox"/> Please quote as an option <input type="checkbox"/> No, thank you				
Additional comments/questions: _____				

Save money by buying your glass locally. This eliminates CAD drawings, crating and shipping charges.

PLEASE SEND YOUR COMPLETED QUOTE REQUEST FORM ALONG WITH YOUR DRAWINGS TO:

**Stair Service, LLC.**  
255 Apollo Way, Hollister,  
CA 95023  
sales@stairservice.com





Toll Free: 800-940-1057

Distributed By:



[www.stairservice.com](http://www.stairservice.com)

[sales@stairservice.com](mailto:sales@stairservice.com)

255 Apollo Way • Hollister, CA 95023

Toll Free: 800-940-1057

Connect with Us:

**IMPORTANT NOTICE**

All contents of this catalog, including logos, system and product images and descriptions are the sole property of Stair Service, Inc. The making and distribution of copies or reproduction of any of its content is strictly prohibited in any format. Exceptions, other than for consideration in purchasing products from Stair Service, Inc., and must be obtained in writing from the San Jose, California Headquarters.